

WIEGAND TO SERIAL RS-232 CONVERTER  
MODEL 04.02143 REV. A  
(COMPONENT LAYER)

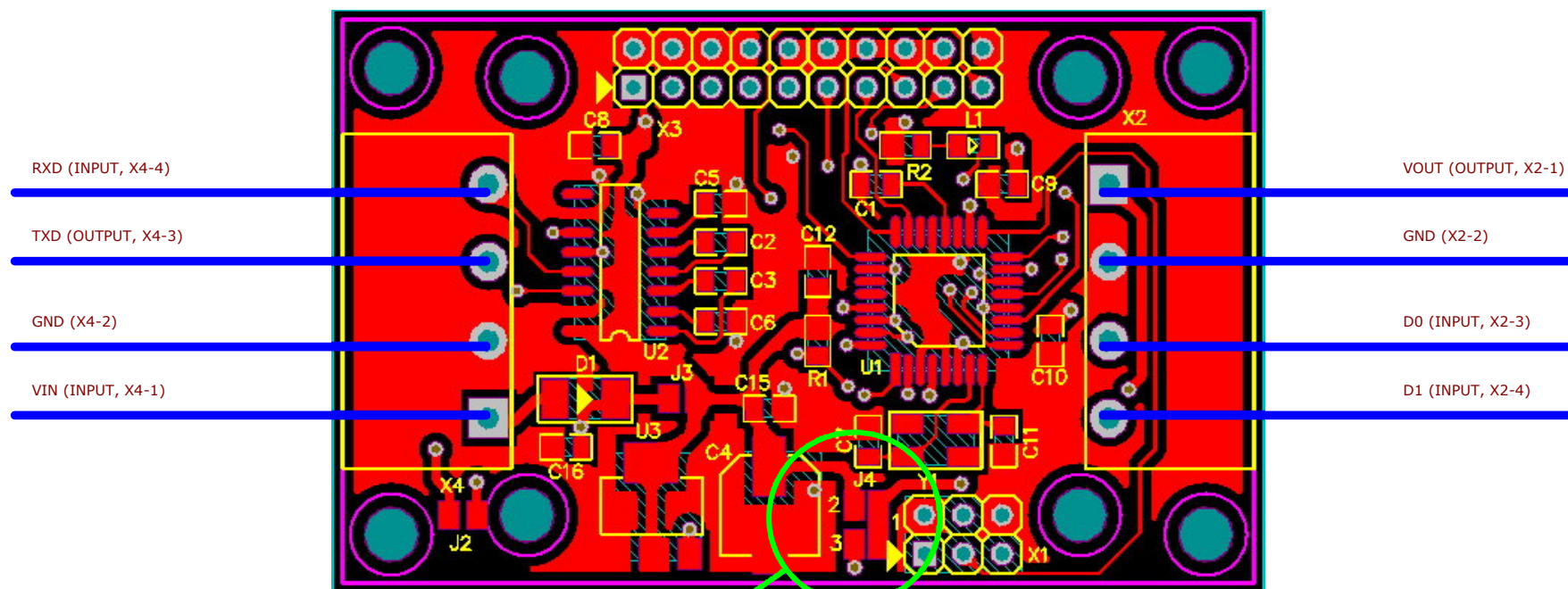
04.02143 RvA

JUMPERS DE CONFIGURAÇÃO  
FECHADO = FUNÇÃO HABILITADA  
ABERTO = FUNÇÃO DESABILITADA

MODO DEBUGGER  
PADRÃO WIEGAND 26 BITS  
PADRÃO WIEGAND 32 BITS  
PADRÃO WIEGAND 37 BITS  
PADRÃO WIEGAND 40 BITS  
CASI-RUSCO  
PADRÃO WIEGAND 35 BITS  
HID CORPORATE 1000 FORMAT

Note 3:

Jumper X3 pins 1-2 closed - enable Debugger Mode  
Jumper X3 pins 3-4 closed - enable decoder WIEGAND 26 bits with parity  
Jumper X3 pins 5-6 closed - enable decoder WIEGAND 32 bits without parity  
Jumper X3 pins 7-8 closed - enable decoder WIEGAND 37 bits with parity  
Jumper X3 pins 9-10 closed - enable decoder WIEGAND 40 bits with parity  
Jumper X3 pins 11-12 closed - enable decoder WIEGAND 37 bits with parity



Notas:

- 1) VIN = 7.5VDC a 12VDC
- 2) Para VOUT = VIN fechar J4 entre pinos 1 e 3
- 3) Para VOUT = 5V fechar J4 entre os pinos 1 e 2

Title  
**WIEGAND TO SERIAL RS-232 CONVERTER CONNECTIONS**

Size	Number	Revision
A4		<b>A</b>
Date:	28/07/2015	Sheet 1 of 1
File:	Z:\Diversos\...diagrama de interligação do conversor wiegand serial rs-232 04	